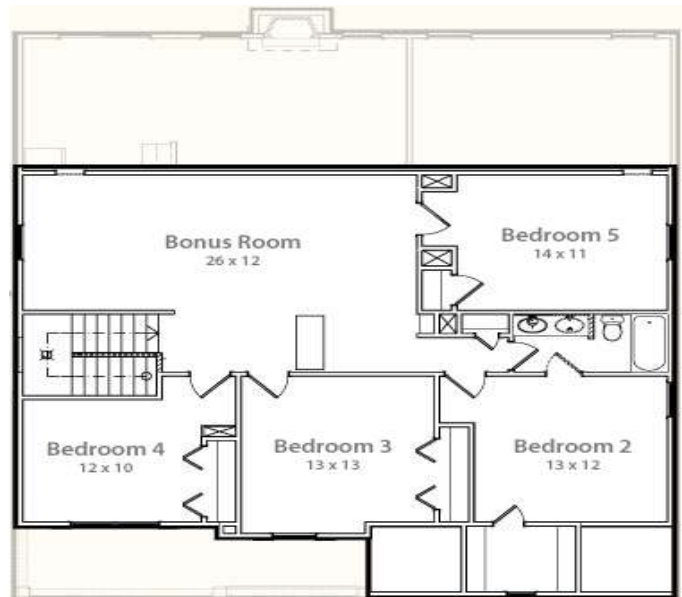
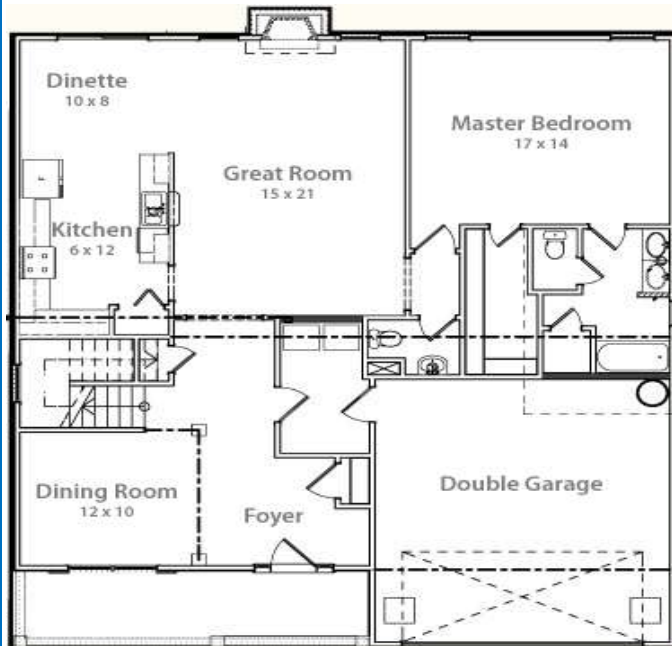


EAGLES NEST

in Chapin



NOW UNDER CONSTRUCTION



THE VICTORIA by Mungo Homes

Lot 18 307 EAGLE CLAW DRIVE

Approx 2866 SQFT 5/6 Bedrooms and Bonus room MASTER ON FIRST FLOOR

\$ 234,900

For more information contact Billy Carter 803-600-8655

or Worth Drake 803-237-3153

onsite sales at 803-345-8012

Or e-mail billy@drakedevelopment.com

Renderings, Photos of homes are examples only. Specifications and color may vary. Price subject to change without notice information deemed reliable but not guaranteed

Eagles Nest Home Features

General

- Engineered construction
- 2-10 bonded home builders warranty program
- Homecoming Meeting prior to closing
- Numerous brick & siding selections
- Community customer service representative
- Dead bolt locks

Interior

- Smooth walls
- 9' volume ceilings (per plan)
- Hardwood flooring in the foyer and dining room
- Nickel lighting package
- Two piece crown molding in the foyer and formal dining room
- Tray or vaulted ceiling in master bedroom (per plan)
- Three phone outlets (Category 5)
- Stair railing (per plan)
- Four television outlets (RG-6)
- Natural Gas Fireplace
- Cumulous ceilings
- Mohawk® plush carpet
- 6-panel molded doors

Kitchen

- GE® ceramic, smooth top range
- Durable solid surface countertops
- GE® dishwasher
- Congoleum vinyl flooring
- GE® microwave
- Stainless steel under mount sink
- Deluxe 4" crown molding kitchen cabinets with brushed nickel knobs
- Single-handle Delta® faucets with sprayer

Baths

- Garden tub in master
- Cultured marble vanity tops
- Separate shower with glass enclosure in master bath
- Low maintenance Sterling tubs in hall bath
- Congoleum vinyl flooring

Energy Saving Features

- Insulated exterior doors
- Gas heat (2nd floor units are heat pumps)
- 13-SEER High-Energy efficient with heat pump
- Fiberglass entrance door
- Divided light insulated windows with tilt sash
- 50 gallon gas water heater

Exterior

- Up to 10 Pallets of Sod
- Maintenance free vinyl soffit
- Fiberglass 20-year shingles
- Deluxe metal mailbox
- 12' x 12' outdoor living area
- Double garage
- Gutters

Additional upgrade options available

**For more information contact Billy Carter 803-600-8655
or Worth Drake 803-267-3153
onsite sales at 803-345-8012
Or e-mail billy@drakedevelopment.com**

Renderings, Photos of homes are examples only. Specifications and color may vary. Price subject to change without notice information deemed reliable but not guaranteed